

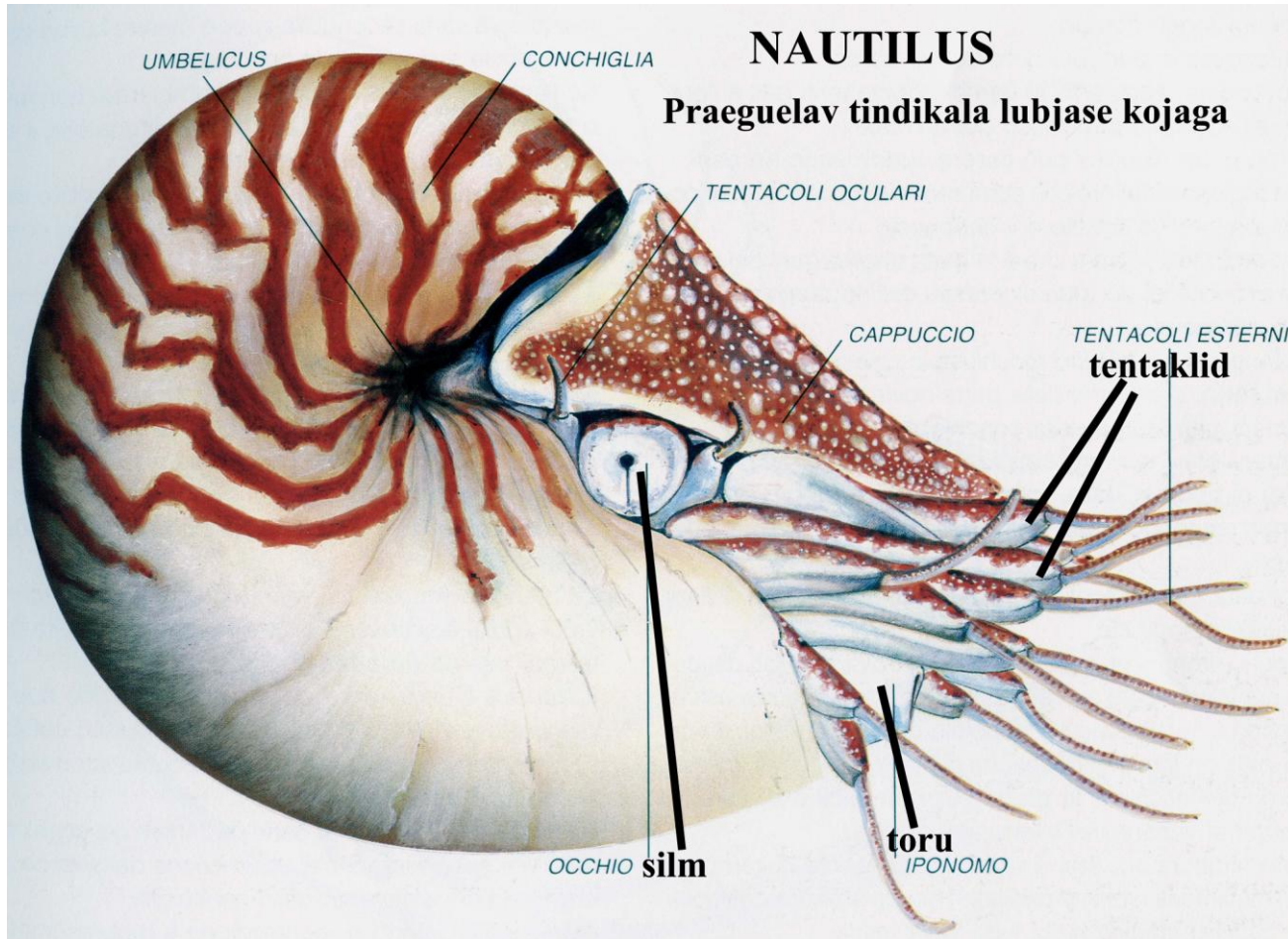
Minu teaduslikud objektid

-

Harri Mutvei

NAUTILUS

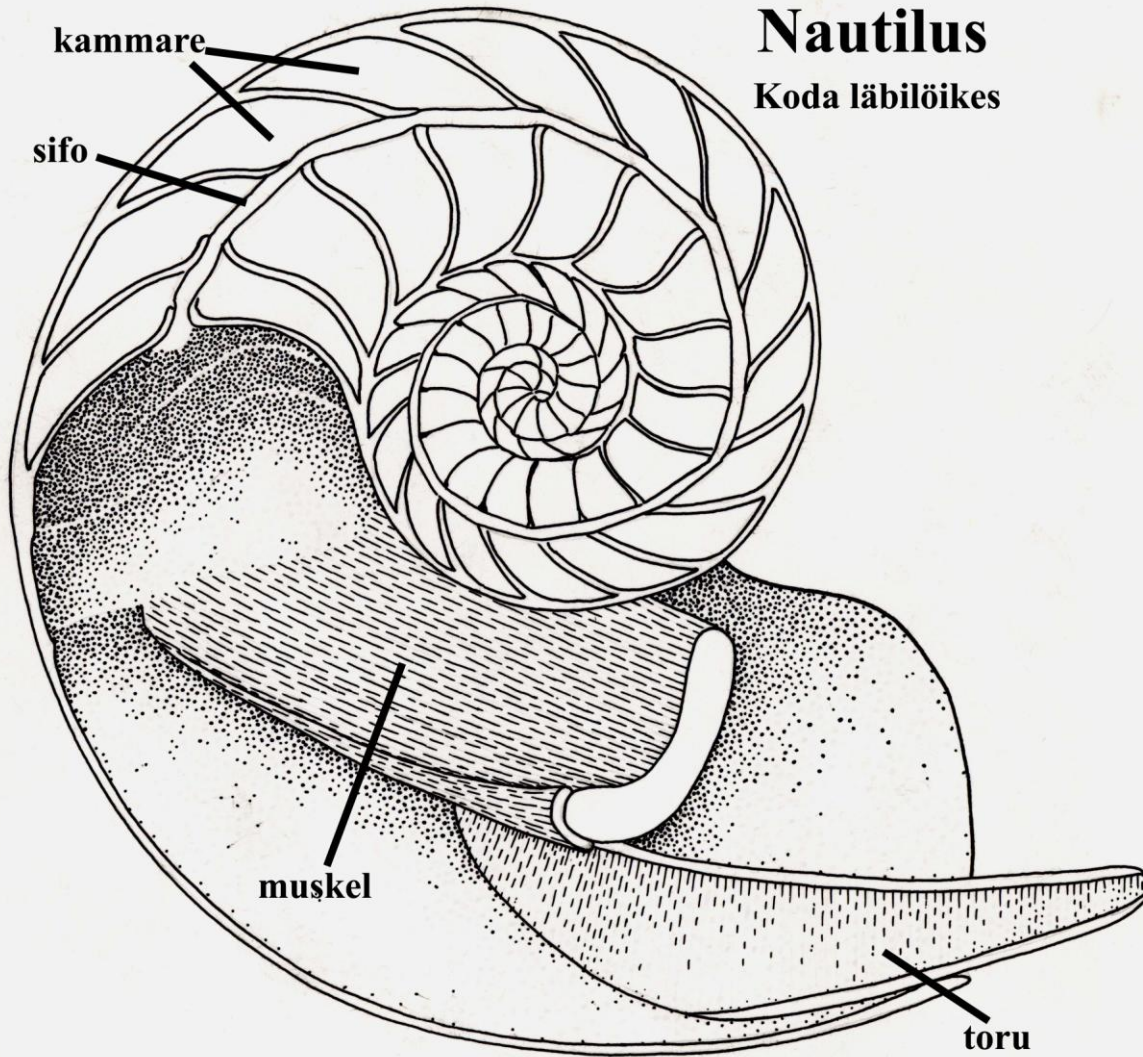
Praeguelav tindikala lubjase kojaga





Nautilus

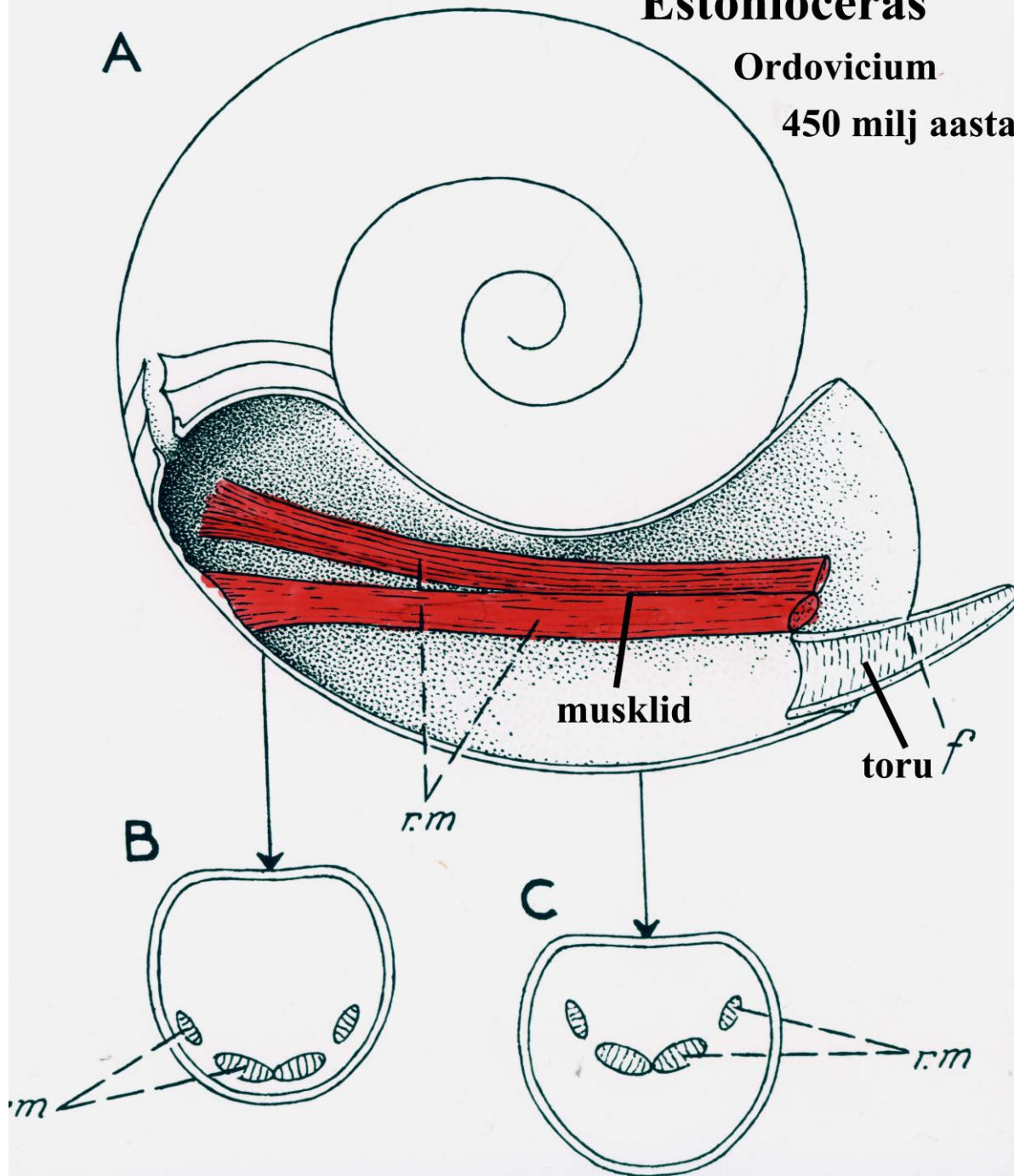
Koda läbilöikes



Estonioceras

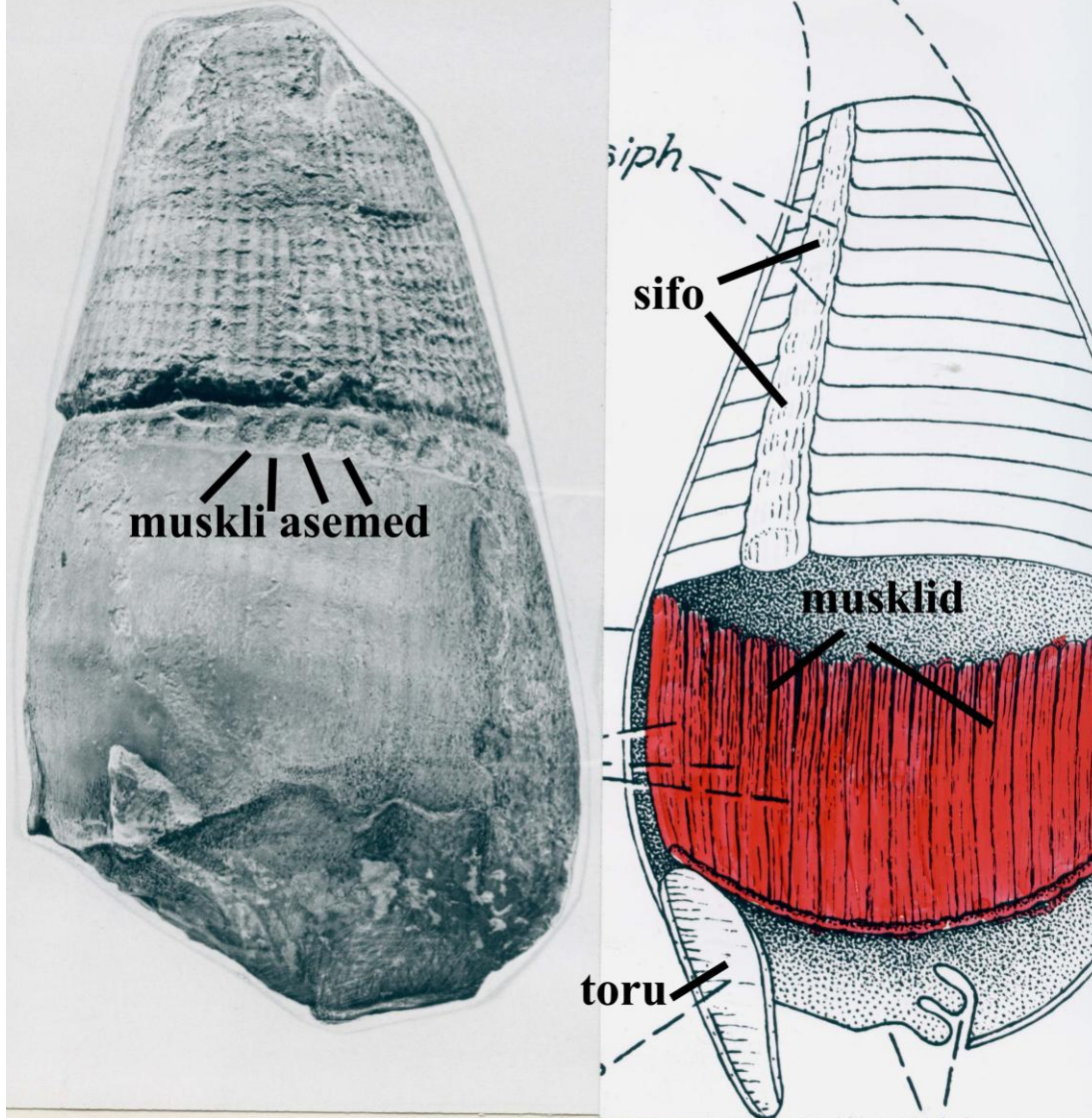
Ordovicium

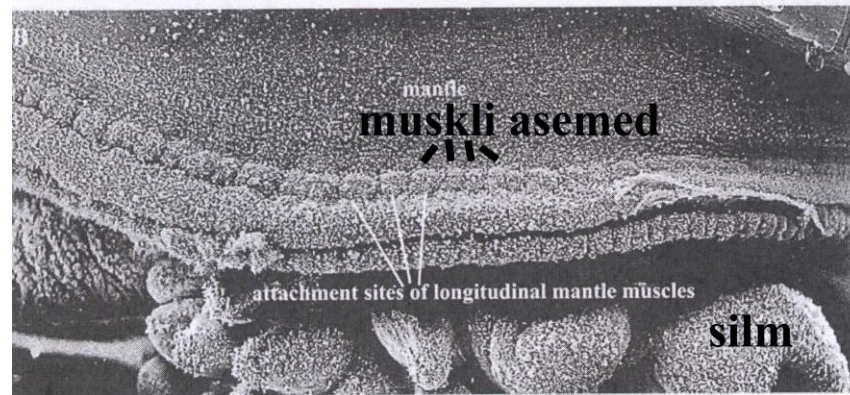
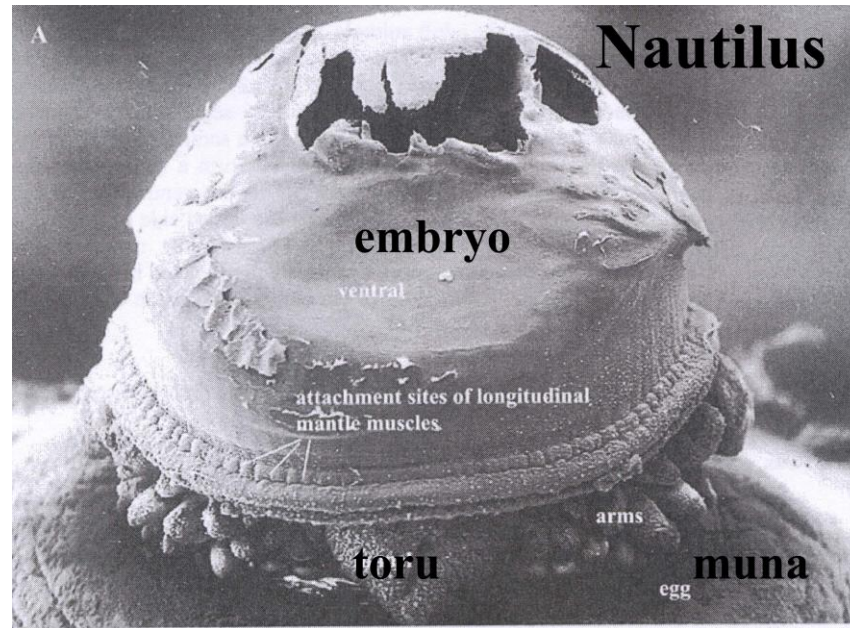
450 milj aastat

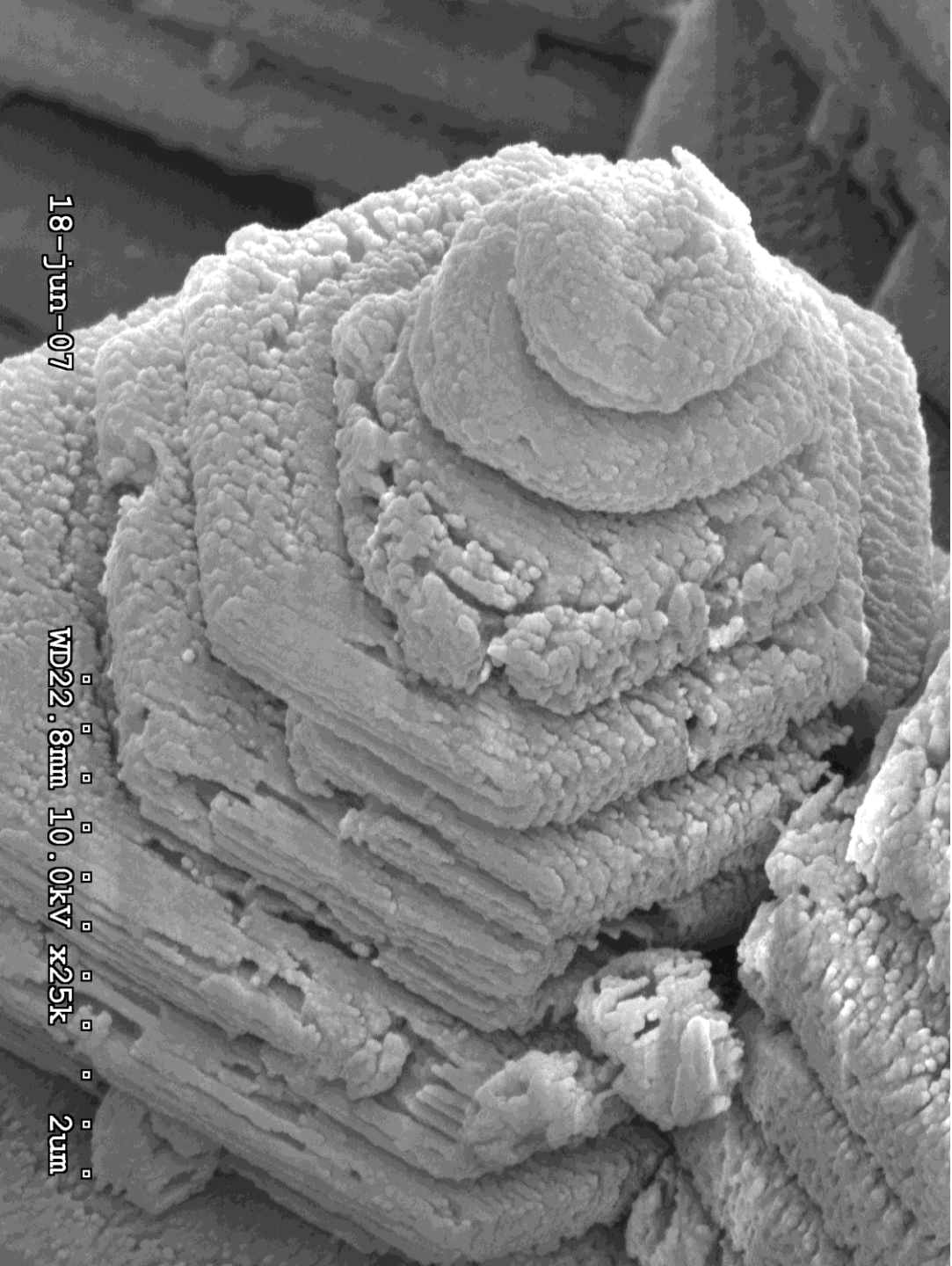


Octamerella

Silur Gotland 400 milj aastat

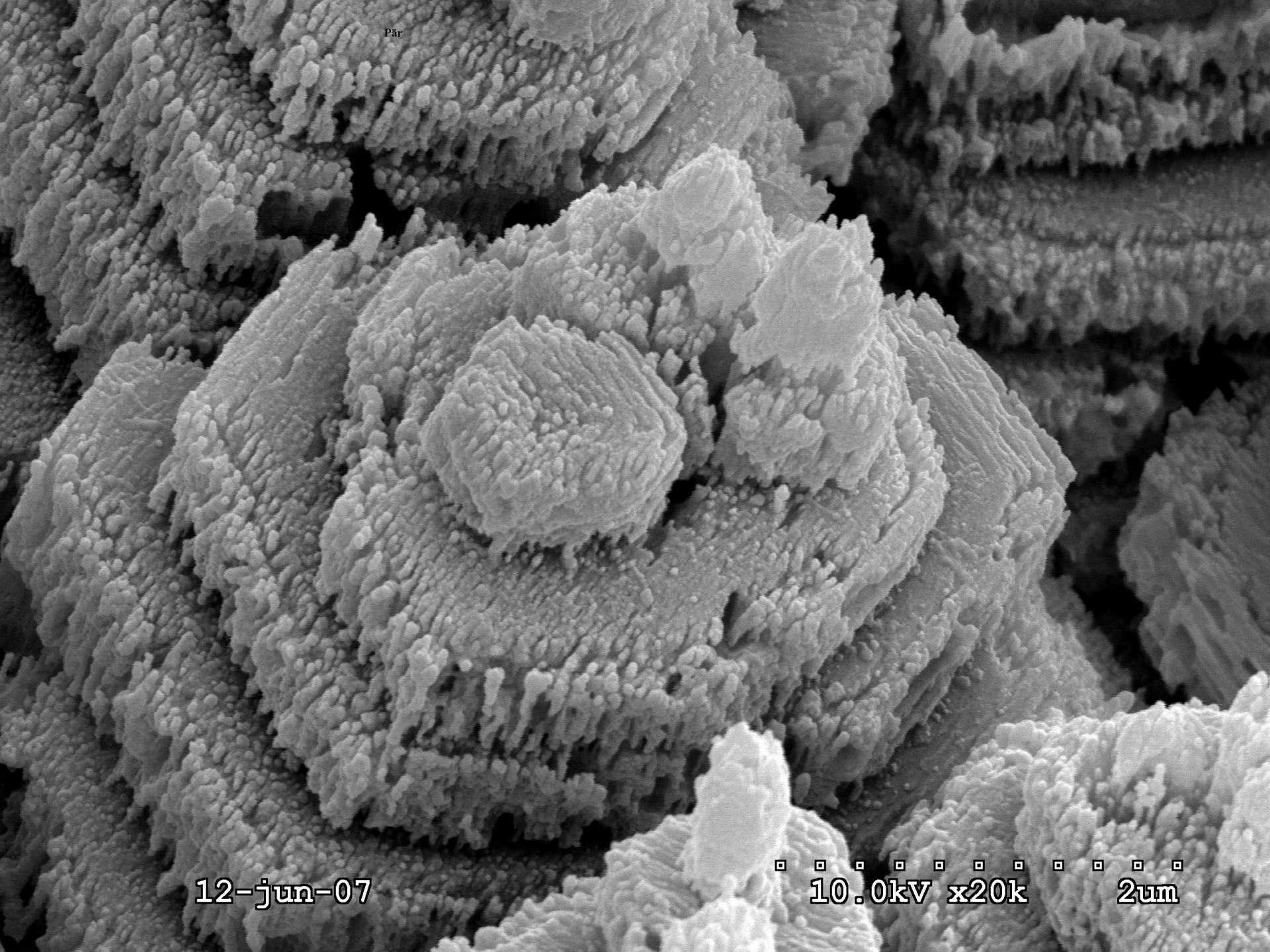






18-Jun-07

WD22.8mm 10.0kV x25k 2um



Pär

12-jun-07

□ □ □ □ □ □ □ □ □ □
10.0kV x20k 2um



ELSEVIER

Biomaterials 21 (2000) 457–468

Biomaterials

Tissue responses to natural aragonite (*Margaritifera* shell) implants in vivo

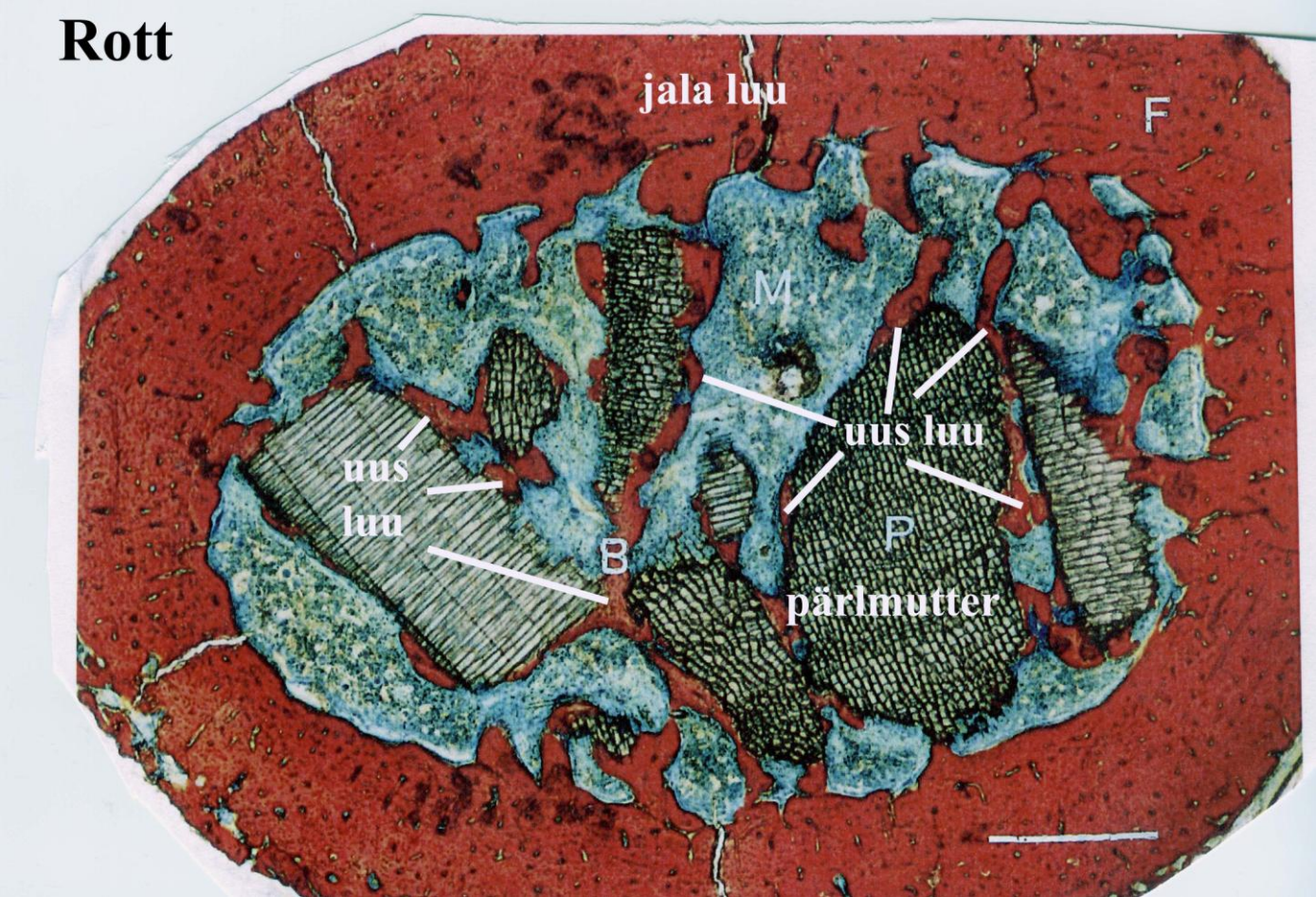
Haihong Liao^a, Harry Mutvei^b, Malena Sjöström^a, Lars Hammarström^a, Jianguo Li^{a,*}

^aCentre for Oral Biology, Box 4064, S-141 04 Huddinge, Karolinska Institute, Sweden

^bSwedish Museum of Natural History, S-104 05 Stockholm, Sweden

Received 15 July 1998; accepted 22 August 1999

Rott



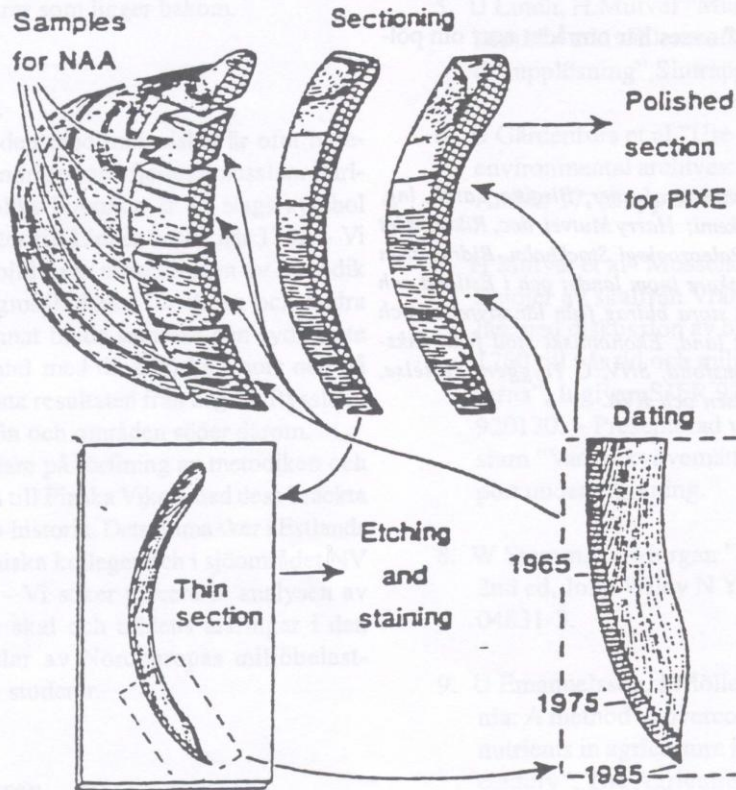
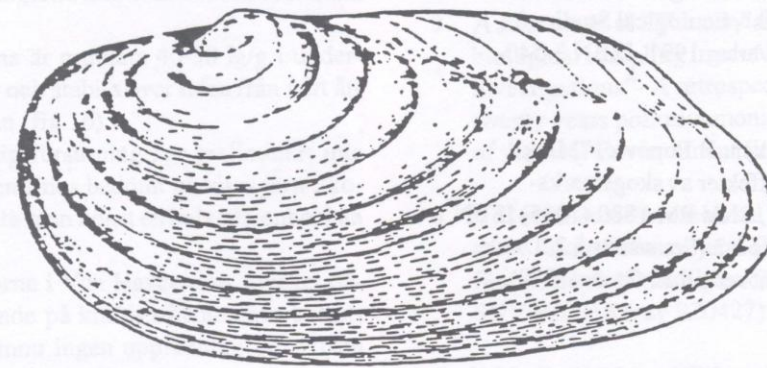


Fig 1 Principer för sågning av slipsnitt för protonmikrosonden (en mikrometers upplösning) och uttag av prov för kemisk analys.

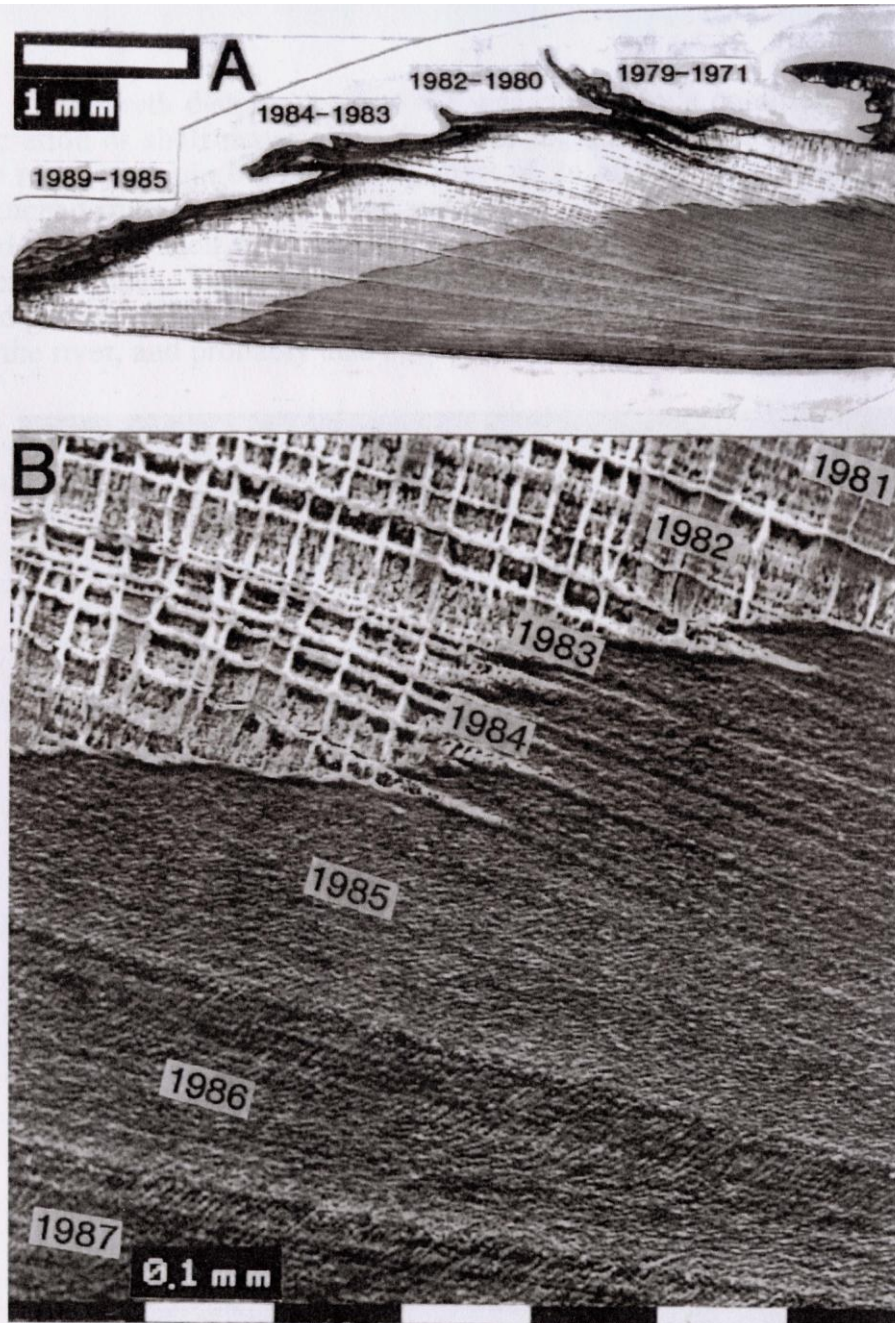
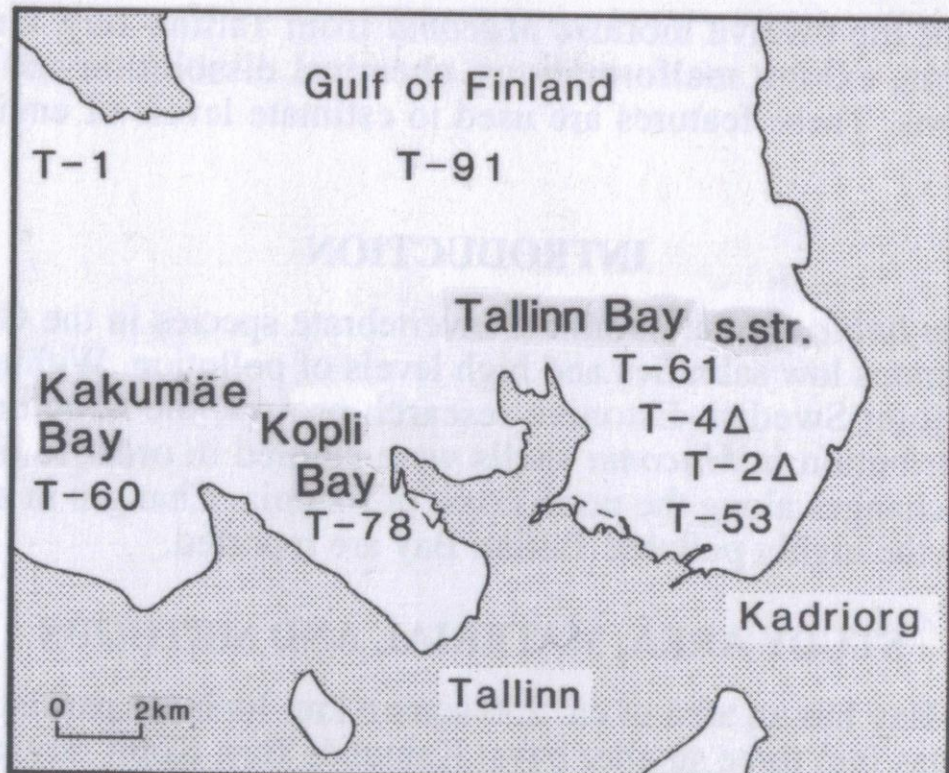


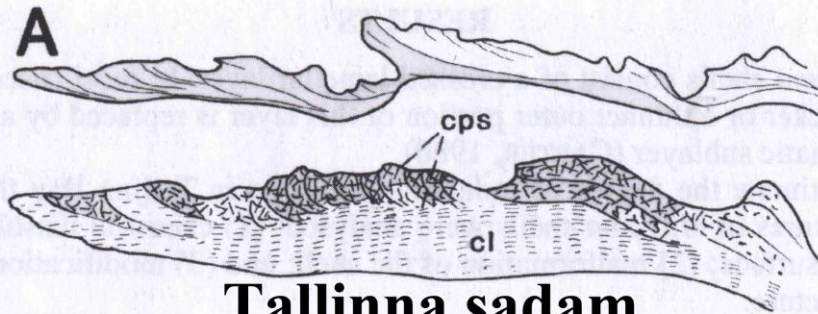
Figure 2 – Polished and etched sections of a *Margaritifera margaritifera* shell from the River Slereboån, W Sweden, to show increased growth rates after 1984.



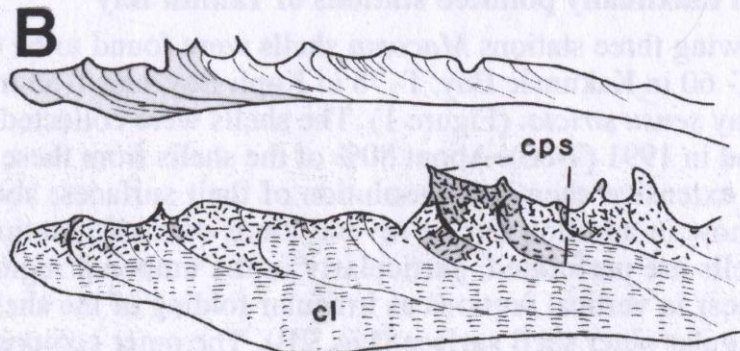
A



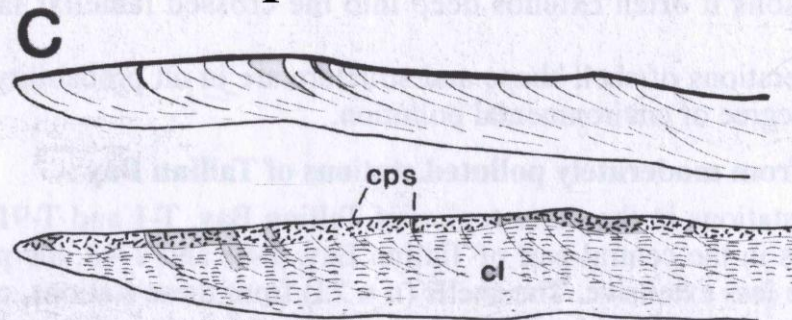
B



Tallinna sadam



Koplilaht



Kadriorg

Figure 2 – Schematic drawings of vertical sections at shell margin. A, a shell from station no. T-53 showing considerable malformations, dissolution of outer surface, and a thick composite prismatic sublayer (cps); B, a shell from station no. T-78 showing irregular outer surface, dissolution of this surface, and a thick composite prismatic sublayer (cps); C, a shell from Kadriorg (= Katharinenthal), collected in 1886, showing a thin composite prismatic sublayer (cps); malformations and dissolution of outer shell surface are absent.

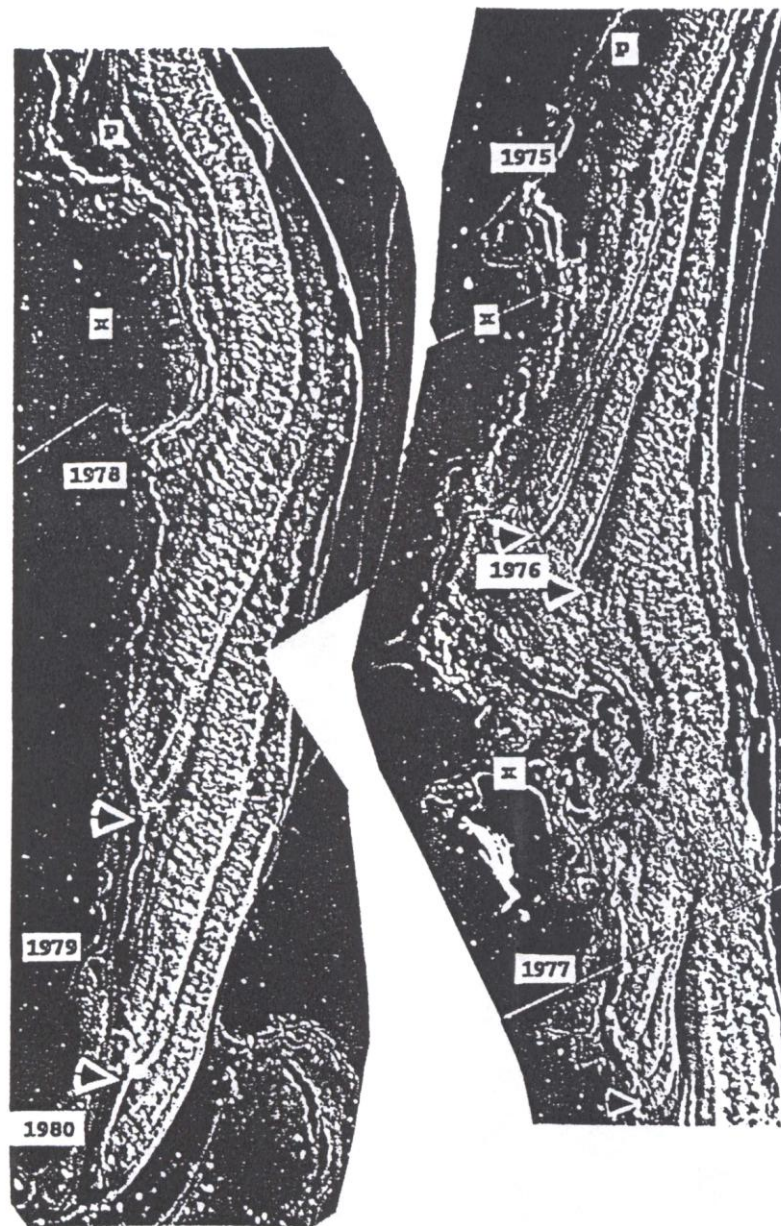


Fig. 8. Specimen from the Bay of Tallinn, about 13 years old; note severe malformations of the shell (x), probably caused by damages to the shell secreting mantle epithelium (see also Fig. 10A).



ELSEVIER

Available online at www.sciencedirect.com

SCIENCE @ DIRECT®

PALAEO

Palaeogeography, Palaeoclimatology, Palaeoecology 228 (2005) 149–166

www.elsevier.com/locate/palaeo

Mutvei's solution: An ideal agent for resolving microgrowth structures of biogenic carbonates

Bernd R. Schöne^{a,*}, Elena Dunca^b, Jens Fiebig^a, Miriam Pfeiffer^c

^a*Institute for Geology and Paleontology, INCREMENTS Research Group, Goethe University, Senckenberganlage 32-34, 60325 Frankfurt/Main, Germany*

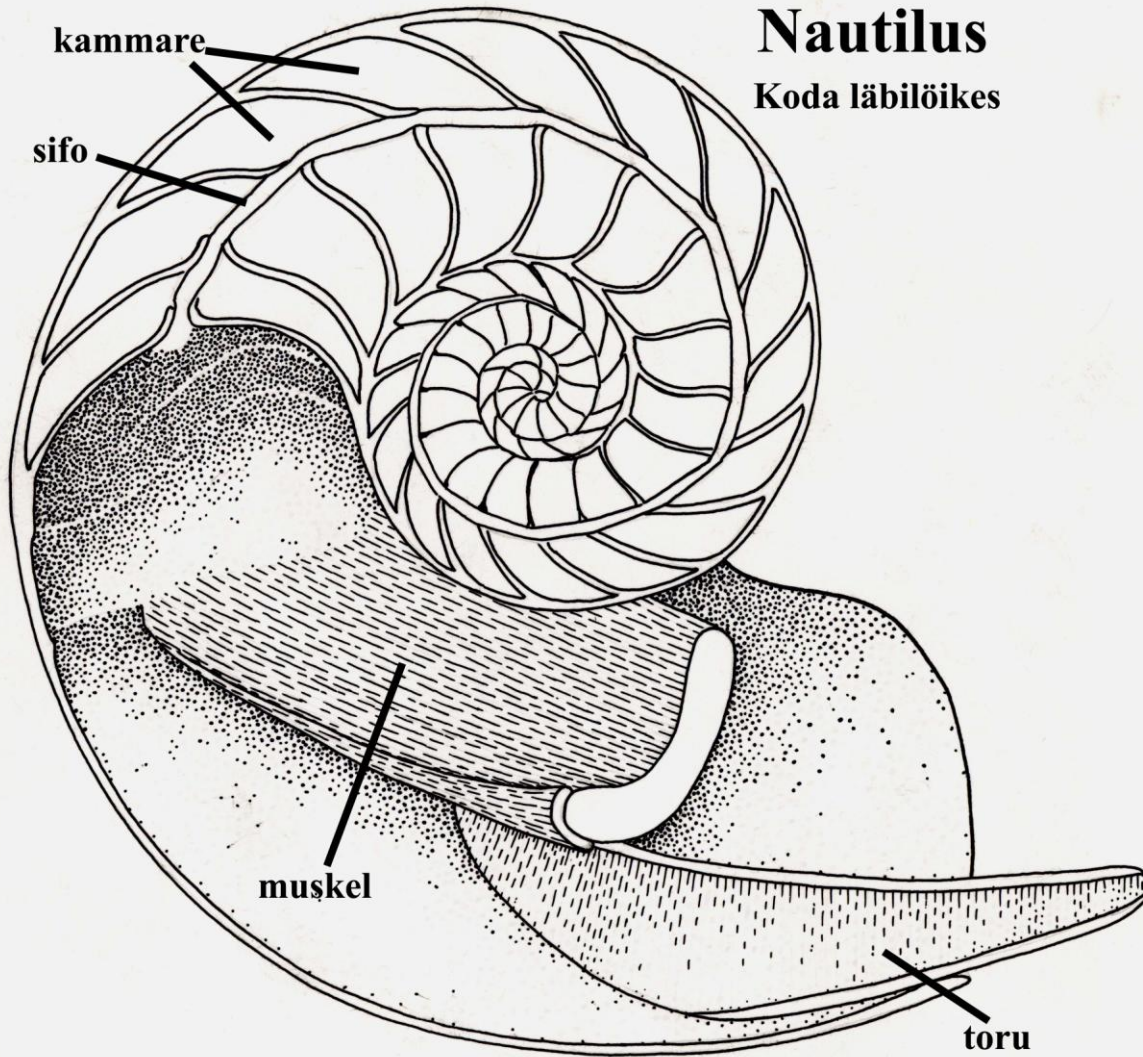
^b*Museum of Natural History, Department of Palaeozoology, Box 50007, 10405 Stockholm, Sweden*

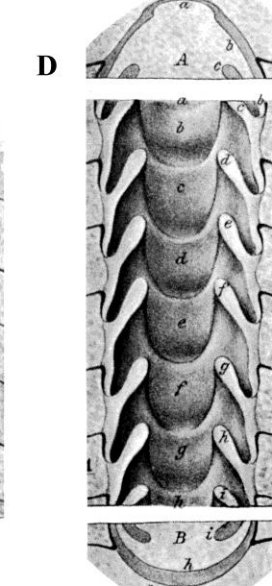
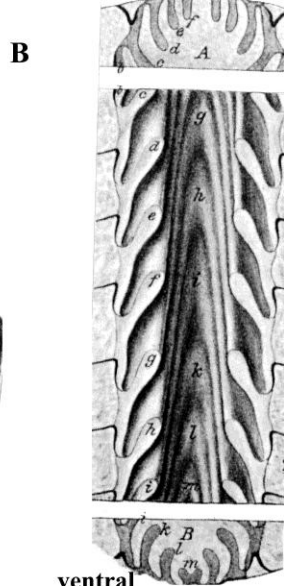
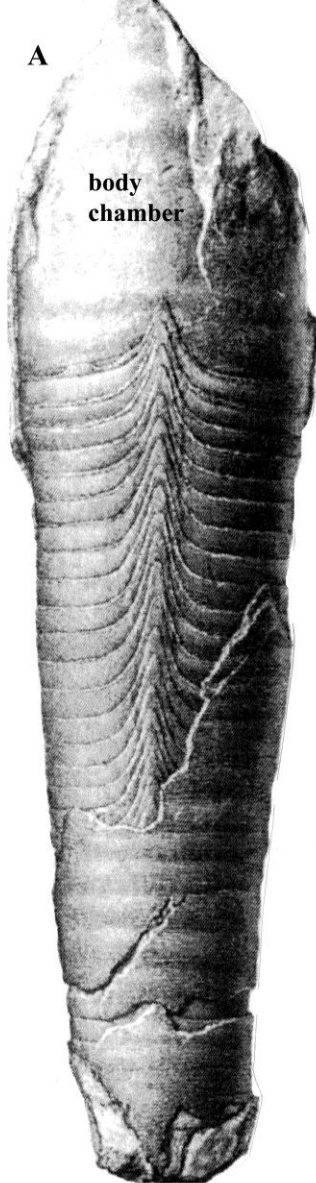
^c*IFM-GEOMAR, Leibniz-Institute for Marine Sciences, Wischhofstr. 1-3, 24148 Kiel, Germany*

Received 30 May 2004; accepted 24 March 2005

Nautilus

Koda läbilöikes



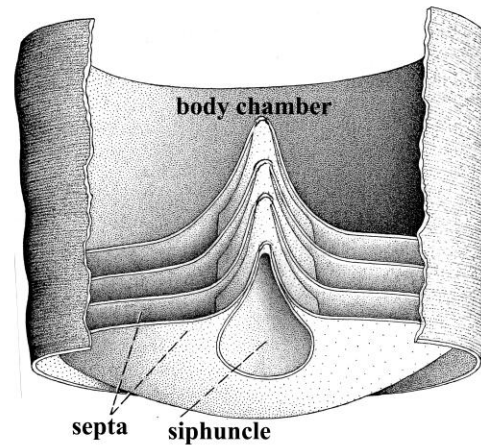


ventral view

lateral view

dorsal view

F



E



G

